

Patricia Avenue School Newsletter

Learning for Living

26.06.2024

office@patave.school.nz

078569350

**Reminder No school Friday 28th March Matariki Day. Base Matariki Hangi Tuesday 2nd July
School closes on Friday 5 July and reopens 22 July**

Kia ora koutou Pat Ave whaanau

Many of you will all be experiencing the midwinter effects of the cold, fog and short days but along with this comes Matariki so I hope that many of you who either have students in our base school or in the Kapa Haka group will join us for our inaugural Matariki hangi. We welcome any whaanau helpers that can support us with this event- Tuesday 2nd July from 11.30am. For our students in Satellites – I know many of you will be undertaking to have your own events and it will be your turn next year!

A very special thanks to the Bennett family from Te Awamutu Pak'n'Save who have very generously supported this event.

I am very fortunate in my 27th year at Patricia Avenue School to have been awarded a Principal Sabbatical this year. This means I will be away undertaking study and research into wellbeing alongside a little 'time out' to refresh over term 3. I know that our dedicated staff team will continue as usual with Ms Christina Bartlett in the Acting Principal role.

I would also like to acknowledge Mrs Shona How who has been at Patricia Avenue School for 20 years and leaves us at the end of this term. Shona has been an incredibly dedicated and passionate teacher and more recently therapist in our school in her area of interest and expertise – Music. I know that many of you will have had the privilege of meeting Shona and she has certainly contributed to the lives and learning of many of our students over the years. We wish her all the best.

Ngaa mihi, Andrea

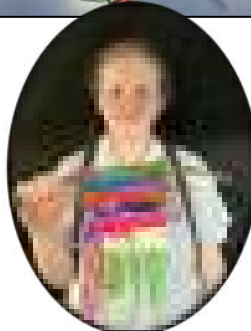
Te Awamutu Satellite Matariki Celebrations

In Room 2 at the Te Awamutu Satellite, students immersed themselves in a Matariki art project focused on unique weaving. With twigs and vibrant wool, they skilfully crafted intricate artworks honouring tradition and culture while expressing their creativity.

After admiring stunning Aurora photos online, students dived into an art project to explore their fascination. The cup decoration station was exciting as students used nail polish to create captivating swirls in various colours. Each cup became a unique masterpiece, showcasing their creativity and cultural appreciation. Sealing with Mod Podge ensured their artwork would last, preserving its creativity and cultural significance.

On Monday 24th June the Matariki preparations culminated in a celebration at the Otawhao Marae. Thank you to the whaanau who attended and supported our celebration.

Kalpna Pillay, Daleen du Toit and Elsie van den Bergh-Teachers



Introducing and Welcome...



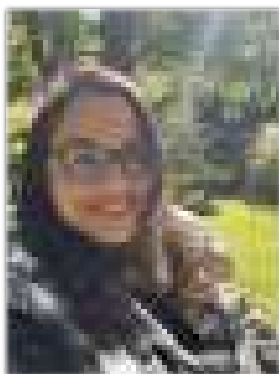
My name is Melissa Delaux, and I have had the pleasure of joining Patricia Avenue as a Speech Language Therapist at the beginning of 2024. I am originally from the far Northeast of England but have lived in New Zealand for the last 20 years. I am returning to working with children after a long stint of working with adults doing

rehabilitation and outpatient work. I have also worked for Talk Link Wellington, Waikato Child Development Centre, and 23 years ago I started out my career working in community clinics and working in Special Needs Schools.

I am also a mindfulness and meditation teacher with a special interest in pain and stress management.

Outside of school I enjoy spending time on the beach and in the forests. I live on an acre of land, so the gardening jobs never stop! I live with my 10-year-old daughter and my French husband. I love to read, play piano, eat chocolate, swim, and dance.

I am passionate about giving the children at Pat Ave the best start in life, they keep me on my toes! Working at Pat Ave School is never boring and there is always something new to learn and share.



My name is Lexi Byram. I am a primary school teacher from America. I have been teaching all over the world including South Korea and United Arab Emirates. I have been living in New Zealand for less than a year and I am absolutely in love with this beautiful country. I arrived in Christchurch July 2023, and while job searching, I took the

opportunity to campervan all around the South Island from Milford Sound to Kaikoura. I am settling into life in Hamilton nicely. In my off time, I love to sing with Hamilton Civic Choir and finding new amazing spots on the North Island. I am enjoying getting to know my students at Patricia Avenue School. Hope to meet you all soon.

Celebrating International Language Week

In week 7 we celebrated International Language week as part of our ongoing intent to build cultural competence of staff and to be sure that we are a welcoming and inclusive school.

The Wednesday staff and students celebrated the day sharing their traditional food, dressed up in ethnic clothing, or sharing stories.

On display in the student foyer is a map of the world and student photos showing our amazing cultural diversity.





Tiaho is a project run by the Royal Academy of Dance to provide affordable dance opportunities led by specialised teachers. The programme aims to offer students with additional learning needs a valuable and engaging creative experience that is fun while building self-confidence and self-esteem. Through regular participation in a group, students enjoy the magical experience of moving to music as well as an opportunity to enhance their self-discipline, coordination, spatial awareness and ability to cooperate with others. With Matariki approaching, Patricia Avenue students have been focussing on relationships with shapes and space working towards building star constellations.

Hayleigh Rossetter—Dance Teacher



Room 8 Production Planning

Here in Room 8, we are learning about The Snowman as part of our musical production. We have been busy watching the story and dancing to its theme tunes, trying on new outfits, and preparing our snowman hats, stars, and snow scenes for our scenery.

We are also finding out about the weather and the seasons and have even made our own snowflakes.

Our final production will have all our props made so that we can wear our snowmen hats, and we will dance to “We’re Walking in the Air” in a magical snowstorm – we will even have our own version of Aurora Australis.

*Debbie Eastwood—
Teacher*



Parents, we need to know

Home Addresses: If your child is currently receiving Specialised Education Transport Assistance (SESTA) you must notify the school immediately you are aware that you will be moving home (R1 address). A new transport application needs to be submitted and applications can take some time (possibly up to 4-6 weeks) for approvals to be confirmed.

Telephone Numbers: To keep our records current and in case of emergencies please notify your teacher and the office for any changes in parent/ caregiver contact details.

Sick Child: To avoid the transmission of bugs, if you suspect or know your child is sick please keep them at home. We have a number of vulnerable students.

To report any absences please choose the student absent line 078569350 or submit an absent message on the **SKOOL LOOP APP** and provide reason why your child is absent. It is important you notify the transport company too.

Cross Country: 027 556 0994

Go Bus Hamilton: 021 314 442

Go Bus Te Awamutu: 021 0759 084



STEP BY STEP GUIDE

Download the SKOOL LOOP APP via Google Play or App store

- Open the Skool Loop App—will land on welcome page
- Click 'Select your schools'- menu to search your school
- Once you reach your school, tick on the righthand side
- Tap 'select schools' button in the right corner
- Tap big orange Choose button. This will load your school and bring up the settings page
- Subscribe to the relevant groups—for parents choose Whole School then click 'go back' to main page

***** SKOOL LOOP IS FREE—NO DATA COSTS*****

Satellite Unit Contact numbers:

Woodstock: 07 8556686 ext 828

Marian: 07 8557515 ext 223

Fairfield: 07 8559718 ext 853

Silverdale: 07 856 7604 ext 818

Te Awamutu Satellite: 078714199 ext 240

Transition Unit: 07 839 4438

Cambridge, Melville Primary and Mangakootukutuku call main office 078569350 and ask to be transferred.

Community Info

Note Satellites follow Patricia Avenue School calendar dates

2024 Term Dates and Calendar

Term 1 07 Feb—12 Apr
(Easter 29 March—2 April)

Term 3 22 Jul—27 Sep

Term 2 29 Apr—5 Jul
02 July Hangi @ Base 11.30am
(Matariki Day 28 June)

Term 4 14 Oct—20 Dec
(Labour Day 28 October)

Parent Support Group (PSG) - Junior School

This year, Patricia Avenue School is establishing a Parent Support Group (PSG), with the Junior School.

The aim of our Parent Support Group is to create a strong connection between home and school/kura. In our PSGs, we would like to inspire, equip, and support parents to give our Tamariki the best learning experiences and support across environments.

Our goals for parents joining these support groups are:

**To have access to a support network.

**To learn from one another.

**To meet other parents and form friendships.

** To gain new and build on existing positive parenting skills.

Our first meeting was great, we had the opportunity to meet other parents and to discuss ideas and topics for future meetings.

The next meeting will be on **Thursday 1 August**, we are hoping to see more parents to join us. More information will be sent home before the date.
Alta Mostert - PSG Facilitator



Hamilton Lego Users Group

is hosting a sensory hour with the aim of creating a quieter environment in which to view the lego displays. No noise no lights operating on the display, reduced lighting and reduced numbers of people

Claudelands Event Centre
11 August 2024
8am to 9am

Tickets available from Ticketek—scan the QR code

Overseas Travellers—info from New Zealand Customs before entering New Zealand.

The NZTD (travellerdeclaration.govt.nz) is an online system that travellers can use to complete a declaration before they travel into New Zealand. The new digital NZTD was launched in August 2023 and not many people know they can now do it online – replacing the paper card you used to fill out on the plane.